

ELLISTON

ECHO

June 2010

www.elliston.com.au

Donation to Community Centre

The Tramontanans—North Assoc Inc has donated \$250 to the Centre to assist with the refurbishment of the office/reception area. Kerry Williams, on behalf of the assoc, presented the cheque to the ECIC chairperson Bruce Agars on the 20th May 2010.



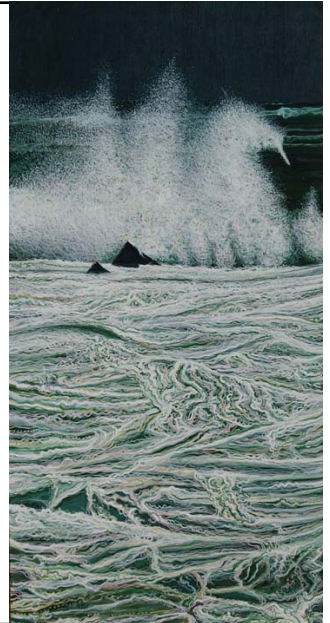
THE SEA ART EXHIBITION

Artist: Barrie Goddard

7th June—25th July

ELLISTON COMMUNITY HALL

Gold Coin Donation Please



Elliston Community Information Centre AGM

24th June 2010

Starting at 7pm

Drinks and Nibbles

Come along and support your community centre

We are a Volunteer organization running a business that the Elliston Community has identified as being an important part of our District, providing many and varied services as well as being an outlet for a variety of locally made products.

We need your support to keep our centre operating, we invite you to be a volunteer and be part of our growing business.

New Stocks of Jewelry, Pottery, Baskets, Leather work, knitwear (woolen socks & Beanies!) are now available at the centre. Great gifts for all occasions.

Thought for the month - If you always sit on the fence you will get splinters in your bum

Salmon Championship Starts 1st June 'til 31st August. Tickets only \$10 for your chance to catch 1st prize. Don't forget to buy your raffle ticket too! Great prizes to be won!!

ELLISTON HEALTH CENTRE

Dates for June

- Thursday 3rd - YAC Meeting
- Tuesday 8th - Diabetes Nurse
- Thursday 17th - Midwife
- Friday 18th - Rural Women's GP
- Tuesday 22nd - Podiatrist
 - OT
 - P & L Hearing
 - Midwife
- Monday 28th - Physio
- Every Thursday - Community Care Counsellor
- Every Friday 2.30pm - Exercise 50+ Group

Please phone 86879012 to book appointments or for more information.



PLEASE KEEP THIS DATE FREE – Sunday 25th July 2010.

Pop this date on your calendar or in your diary **NOW!** It is the day Sheringa celebrates 100yrs of St John's Anglican Church with a morning service at 10.30AM. There are plans to hold another late afternoon service so the lamps can be lit. Luncheon will be available. Further details will be released at a later date but Chris & Dianne Watson will be happy to hear from you if you wish to contact them, especially if it is with a very welcome offer of help to repair the roof, paint a few bits & pieces and with a general cleanup. Ph 86766049 or email: cwatto@activ8.net.au



CHEM CERT

Accreditation & Re-accreditation

Thurs 1st July 2010

8.30am—5pm Accreditation

12.30pm—5pm Re-Accreditation

Elliston Community Sports Centre

Registration forms available at Info Centre

HOME SERVICES & CARER SERVICES

Mid-West Community Health home services program provides a range of services for frail older people, younger people with a disability and their carers who are experiencing difficulties in managing daily tasks. Services provided aim to assist people to remain independent at home and in the community.

Are you caring for someone through a family relationship, friendship, looking after a frail older person or someone with a disability or chronic illness to assist them to continue living in their own home then you may be eligible to receive carer support services.

For more information and to determine your eligibility please contact:

- Lyn Sweet – Home and Community Care Coordinator - 86261310 (Visits Elliston first Tuesday of month and third Thursday of the month).
- Janece Archer – Community Health Nurse Elliston - 8687 9012

**Elliston
Community
Library News**



Training manuals for Excel, Word, Access, and producing Business Documents using Office (all 2007) have been purchased for the community to use in the centre. So if you want to learn more about how to use these programs, come in and give it a try.

The Elliston Echo is published on the first Wednesday of each month, if you have a community notice or some interesting news you would like to share with the community, please email, fax or drop into the centre by 2pm on that Wednesday.

Produced by the Elliston Community Information Centre